



V E R S E
BUILDING

18 Brunswick Place
Old Street, N1



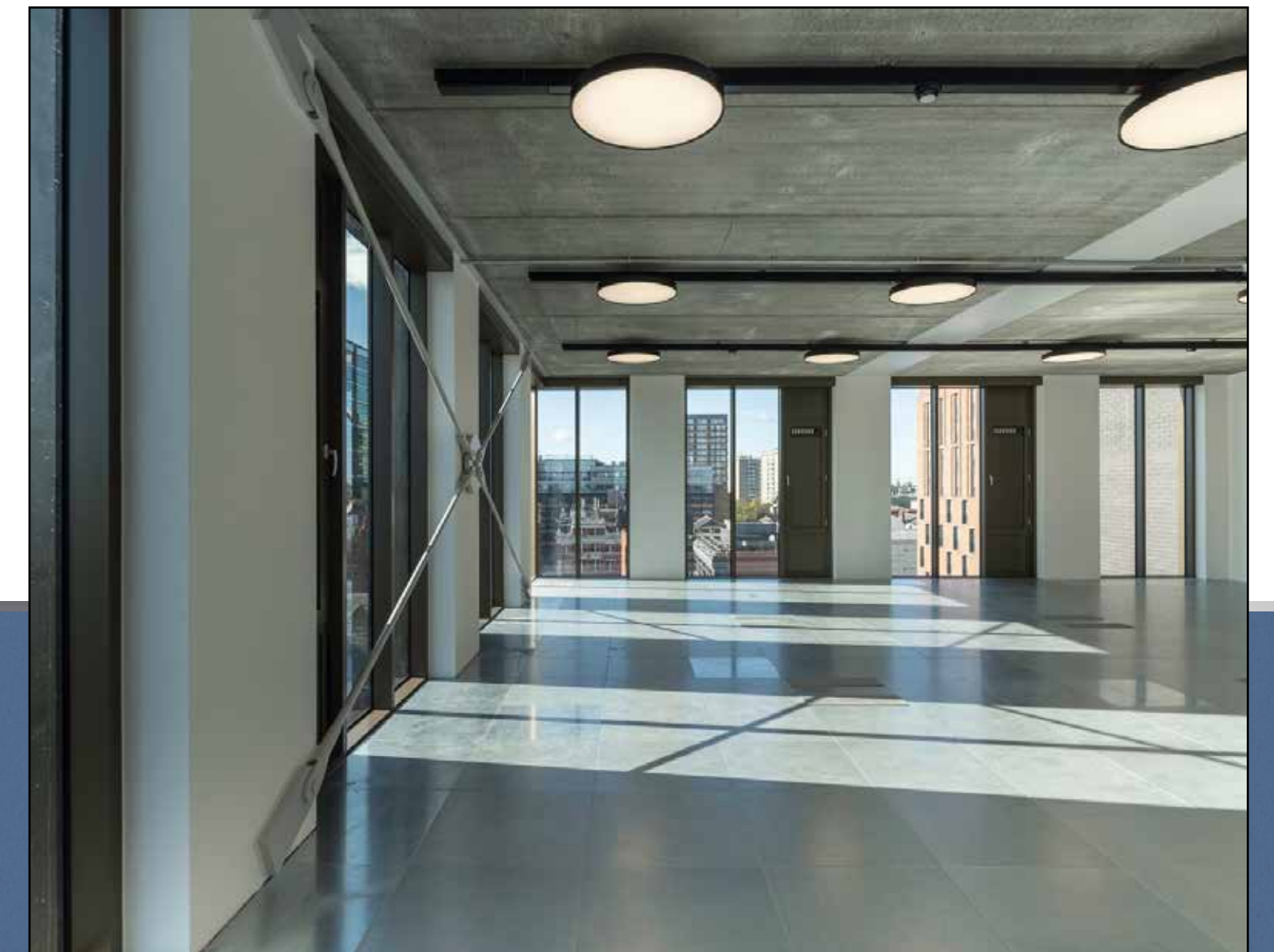
Verse Building offers contemporary and flexible office space from 2,000 sqft, ideal for forward thinking tenants in the heart of London's most creative district.



A brand new development, designed by renowned architects BuckleyGrayYeoman featuring state of the art design, connectivity and sustainability.

Verse Building offers open plan and bespoke fitted office floors, situated in the epicentre of Shoreditch.

Verse Building offers office space from 2,000 sq ft of contemporary and flexible space, ideal for forward thinking tenants in the heart of London's most creative office district.



7TH FLOOR ↗



↑ 7TH FLOOR
← EXTERNAL SHOT

Stunning floor-to-ceiling windows allowing daylight to create symmetry and balance throughout.



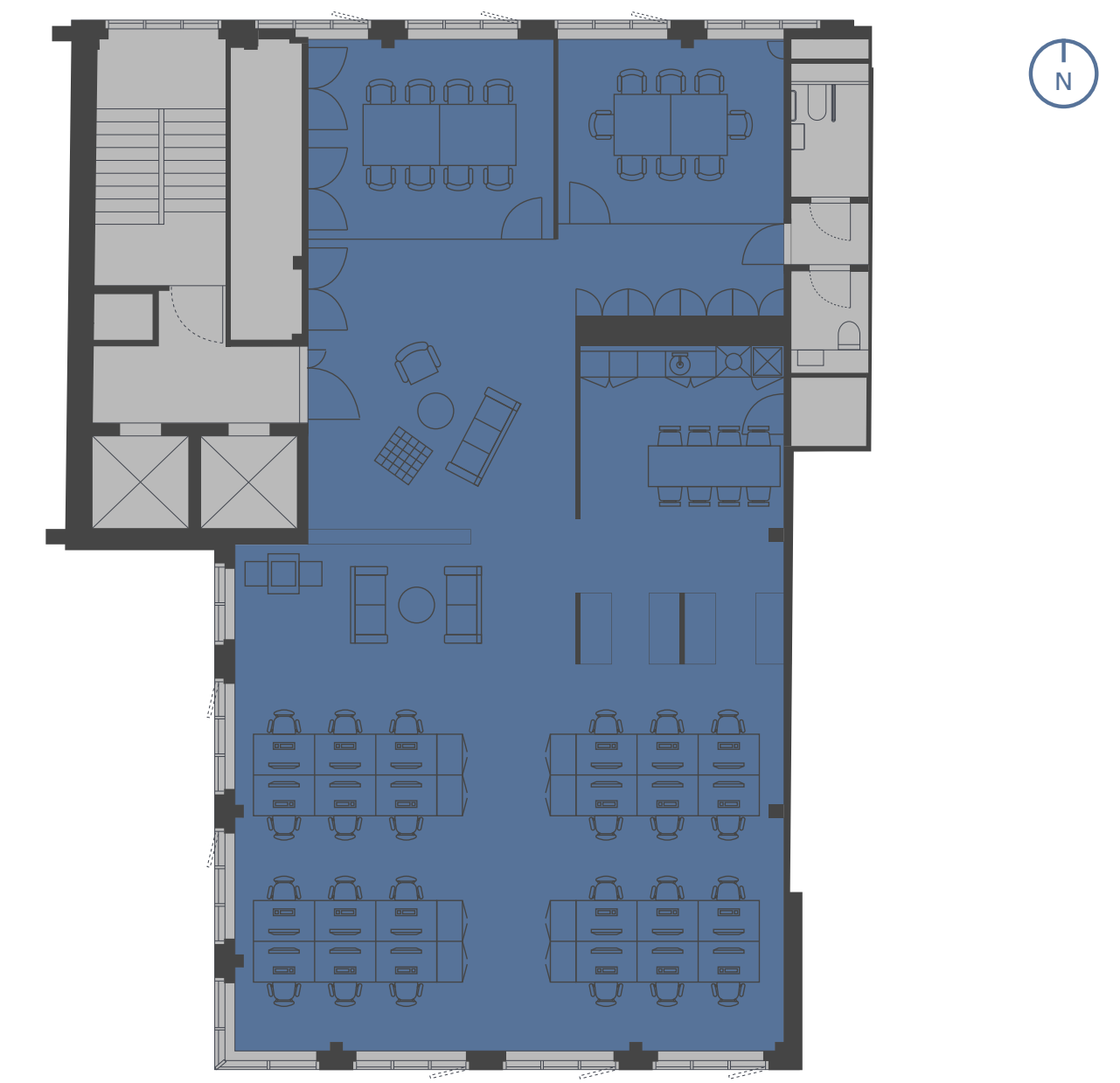
- 2 WC's
- 24 Desks
- Fitted kitchenette
- LED Lighting
- 2 Meeting Rooms
- 3 Breakout Spaces

Fully fitted offering readily available for occupation. A bespoke fitout can be provided on any of the available floors throughout the building.

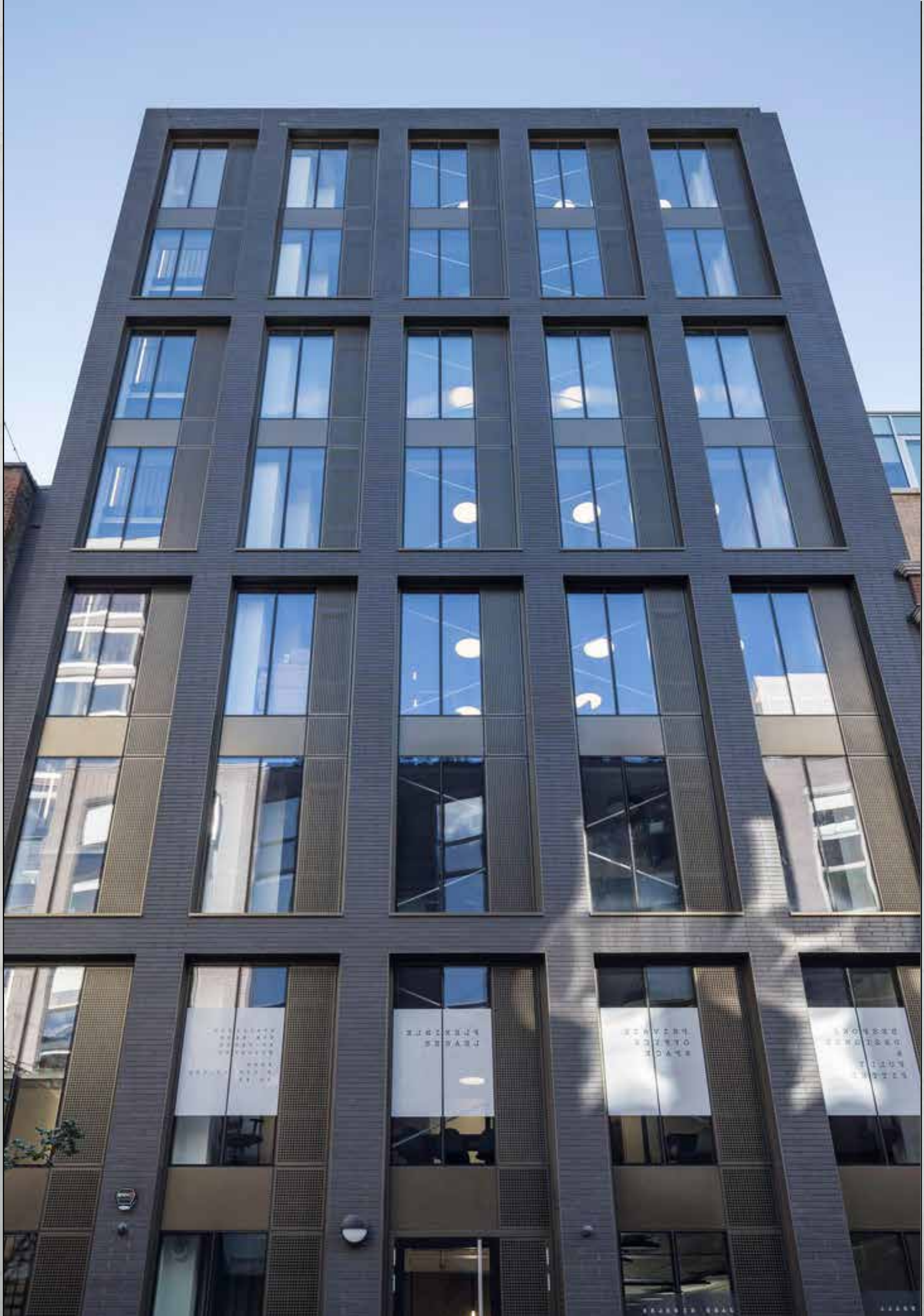


SECOND FLOOR SPACEPLAN

2,120 SQ FT / 197.0 SQ M



24 desks / 2 meeting rooms / 3 breakout spaces / kitchenette + staff area

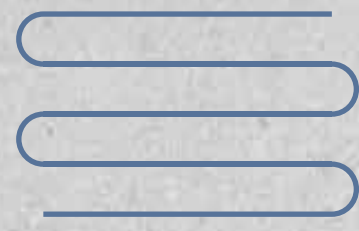


Bespoke finishes enveloped within a tailor made space.

A new development designed by world renowned architects BuckleyGrayYeoman

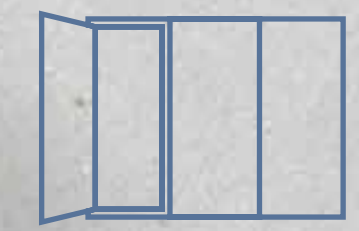
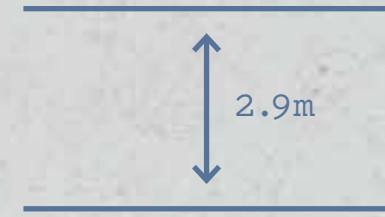
New flexible under floor air conditioning system

BGY



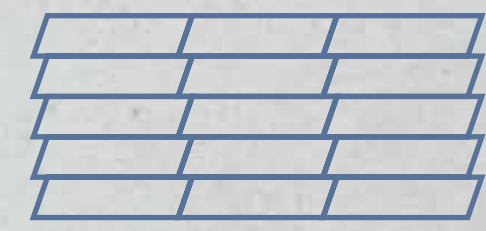
2.9 metre floor-to-ceiling height

Full height glazing with openable windows



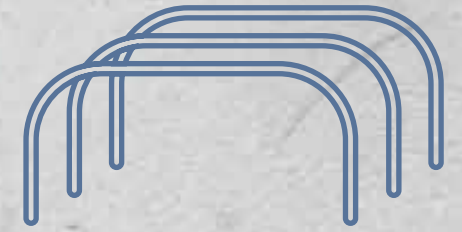
Exposed concrete and steel soffits

Suspended LED lighting



48 cycle spaces

48 lockers and 6 showers





Schedule of Areas

Efficient floor plates throughout from 2,000 sq ft of space providing a perfect working environment. Clean architectural lines and floor-to-ceiling daylight creates symmetry and balance.



THE BUILDING

Floor	Sq ft	Sq m	Availability
7th	2,111	196.1	Available
6th	2,112	196.2	Available
5th	2,118	196.8	LET - CLUBHOUSE STUDIOS LTD
4th	2,118	196.8	Available
3rd	2,126	197.5	LET - KAIZEN SEARCH MARKETING LTD
2nd	2,120	197.0	Available
1st	2,125	197.4	LET - TELROCK SYSTEMS LTD
Ground	1,973	183.3	Available
TOTAL	16,803	1,561.1	

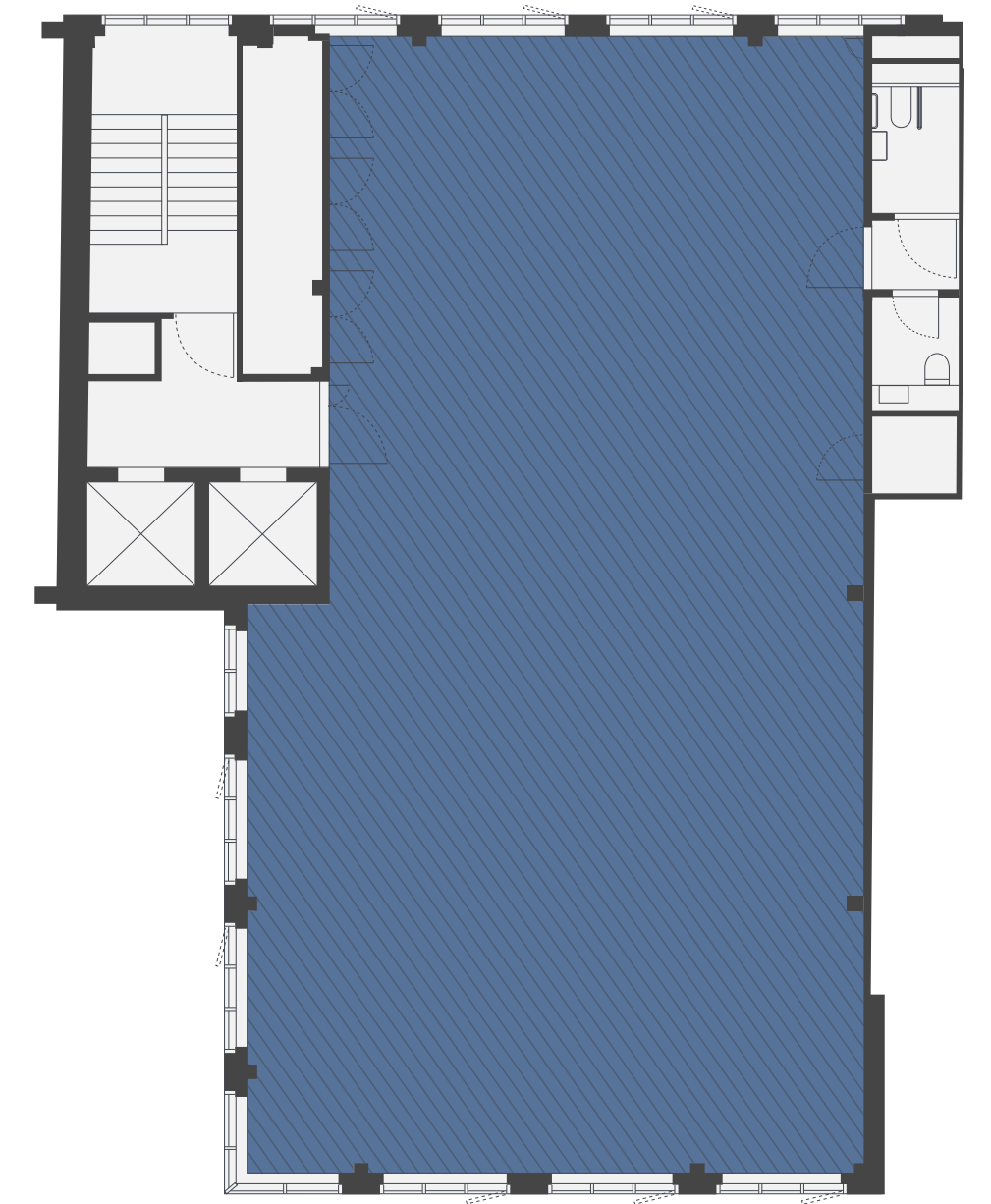
GROUND FLOOR

1,973 SQ FT / 183.3 SQ M



TYPICAL UPPER

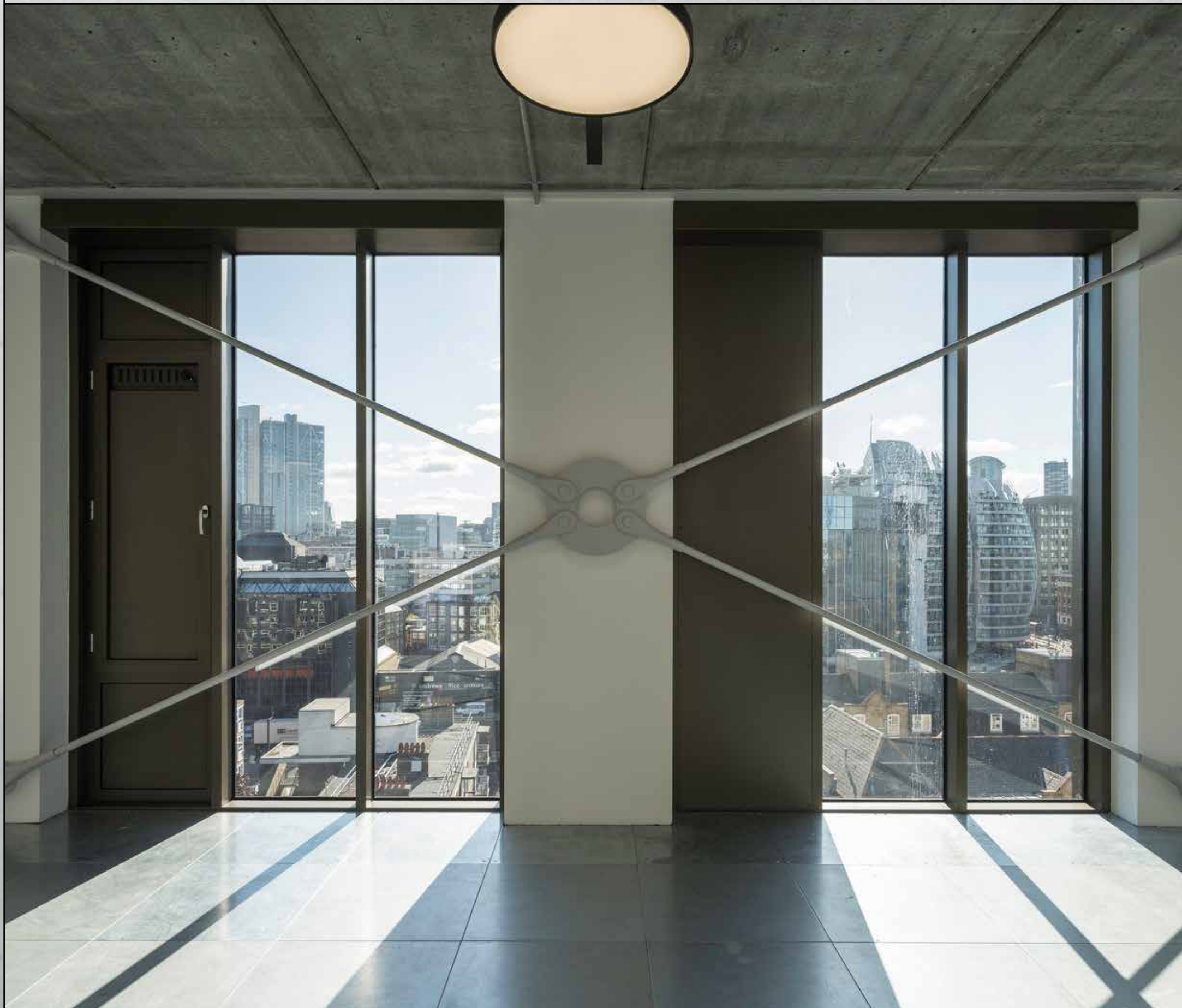
2,100 SQ FT / 195.0 SQ M

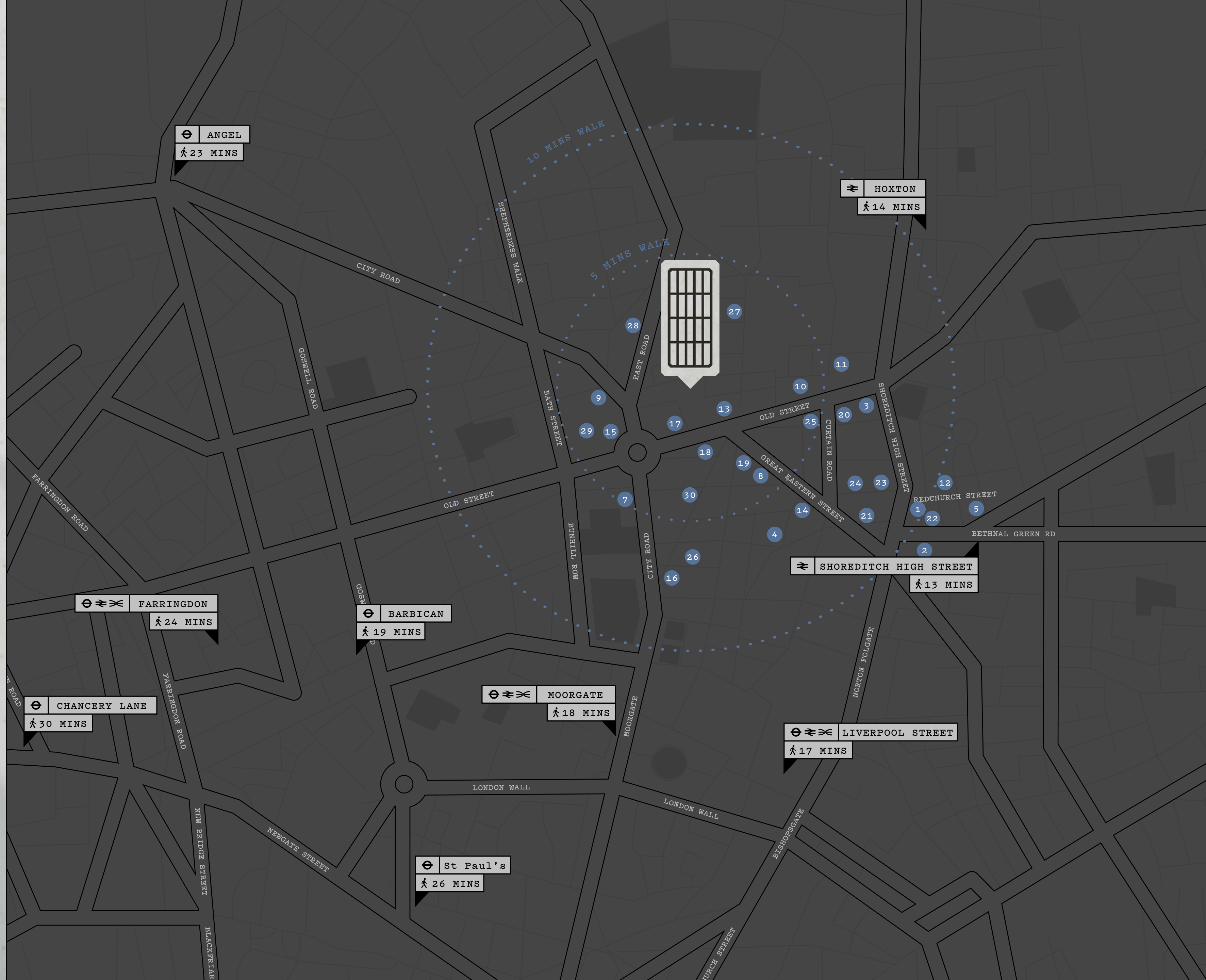




High-quality office space, positioned in the creative district of Shoreditch.

Views from 7th floor ↓





EAT

1. Smoking Goat
2. Spitalfields Market
3. The Clove Club
4. Padella
5. Dirty Bones
6. Hawksmoor
7. Passo
8. Hoxton Grill
9. Honest Burgers
10. The Breakfast Club

DRINK

11. Troy Bar
12. Owl & Pussycat
13. Bounce
14. The Book Club
15. Shoreditch Grind
16. Flight Club
17. Simmons Bar
18. XOYO
19. Floripa
20. The Blues Kitchen

WELLNESS

21. Village Underground
22. Shoreditch House
23. FRAME
24. New Inn Yard
25. Huckle The Barber
26. Fight City Gym
27. Cruzon
28. Fierce Grace
29. Gymbox
30. Q Shoreditch



Viewings
strictly by
appointment
through:

Compton

Elliott Stern
es@compton.london
07834 918700
020 7101 2020

Jake Kinsler
jk@compton.london
07928 049777
020 7101 2020

Ashwell LONDON

Ash Sharma
ash@ashwell.london
07721 001751
020 7758 3285

Harriet James
harrietjames@ashwell.london
07586 300172
020 7758 3287

Compton and Ashwell London give notice that these particulars are set out as a general outline only for the guidance of intending Purchasers or Lessees and do not constitute any part of an offer or contract. Details are given without any responsibility and any intending Purchasers, Lessees or Third Party should not rely on them as statements or representations of fact, but must satisfy themselves by inspection or otherwise as to the correctness of each of them. No person in the employment of Compton or Ashwell London has any authority to make any representation or warranty whatsoever in relation to this property. November 2021

Designed by studio185.london | 370

2nd floor office space